

DRAFT



Improving Health & Wellbeing in York

Our strategy 2013-16

Contents

Foreword	3
Introduction and context	4
Our vision	8

Our priorities

Cross-cutting themes, principles and actions	9
Making York a great place for older people to live	12
Reducing health inequalities	18
Improving mental health and intervening early	23
Enabling all children and young people to have the best start in life	28
Creating a financially sustainable local health and wellbeing system	32

Links to city wide plans	35
Delivering and monitoring	36

Foreword from the Chair of York's Health & Wellbeing Board

On behalf of York's Health and Wellbeing Board, I am delighted to introduce York's first Health and Wellbeing Strategy. I strongly believe this will pave the way for improving the health and wellbeing of the people of York, it will ensure we have the right services and provision in place to meet health and wellbeing needs. It is more important than ever that we overcome the challenges of reduced and limited public budgets and we work collaboratively across organisations and sectors to ensure health and wellbeing services are sustainable in the long term and fit for purpose.



In the past year we have seen the Royal Assent of the Health and Social Care Act 2012 – the biggest change to the National Health Service since it came into being in 1948. As part of this new legislation councils will take on more responsibility for public health, doctors will have increased control over health budgets and the new organisation 'HealthWatch' will give a voice and information to people who use health and wellbeing services. The introduction of the Health and Wellbeing Board gives us a unique opportunity to work together more closely towards more integrated, joined up services – which are needs led, not system led.

We are also seeing the biggest changes to the welfare system for over 60 years. The Government's introduction of Universal Credit, and changes to local housing allowance and housing benefit will have varied consequences for our residents, especially the most vulnerable – their levels of income and standards of housing. It is vital that we work to reduce health inequalities and we intervene early, looking 'upstream' to enable all children and young people to have the best start in health and prevent poor health outcomes later in life.

This Health and Wellbeing Strategy is the start of a new road along our journey to reducing health inequalities and achieving joined-up, holistic services. Changing our local health and wellbeing system is challenging and complex, but not impossible. The Health and Wellbeing Board has the authority and influence to lead cultural and behaviour change and has the overall stewardship of improving health and wellbeing outcomes for patients and residents.

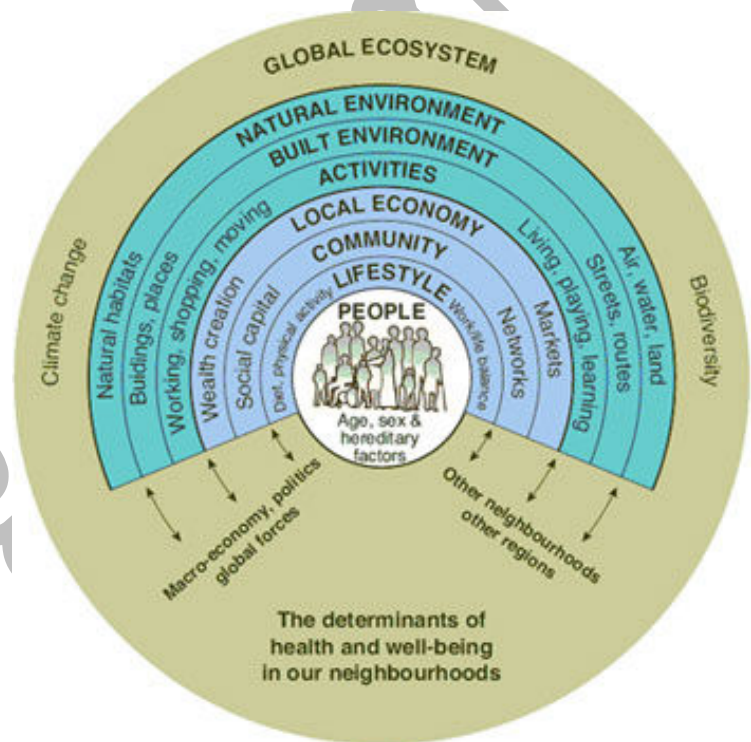
Finally, but most importantly, I would like to thank residents, staff and our partner organisations who have worked with us to develop this strategy. You have given us valuable ideas and suggestions about how we can improve health and wellbeing in the city. We have made every effort to listen to what you have told us and I hope you can see this reflected throughout our priorities, principles and actions.

Councillor Tracey Simpson-Laing
Chair, York Health and Wellbeing Board

Introduction and context

On the whole, people in York have a good standard of life. As residents, most of us can expect to be well educated, have access to good quality employment and, for the most part, live long, healthy and happy lives. However, this is not true for everyone, and there are still significant health and wellbeing challenges for the city including the differences in life expectancy between some areas of the city and others, the growing needs of our ageing population and particular challenges around mental health and emotional wellbeing. Based on our understanding of the needs in York¹, this strategy sets out our priorities for improving residents' health and wellbeing, and together, as key organisations and as a whole city, what we will do to deliver these priorities.

Health and wellbeing is about more than illness and treatment. It is about being well physically, mentally and socially, feeling good and being able to do the things we need to do to live a healthy and fulfilled life². Many factors affect our health and wellbeing, these include: where we live, our housing, the local economy, our income, the environment, our relationship with the local community and the lifestyle choices we make. These determinants of health and wellbeing are shown in the diagram on the right. It is therefore vital that we not only tackle the effects of ill-health but we also address the wider factors and causes. We will champion good health and wellbeing, identify and harness the determinants that contribute to positive health, building on our strength as a successful and ambitious city.



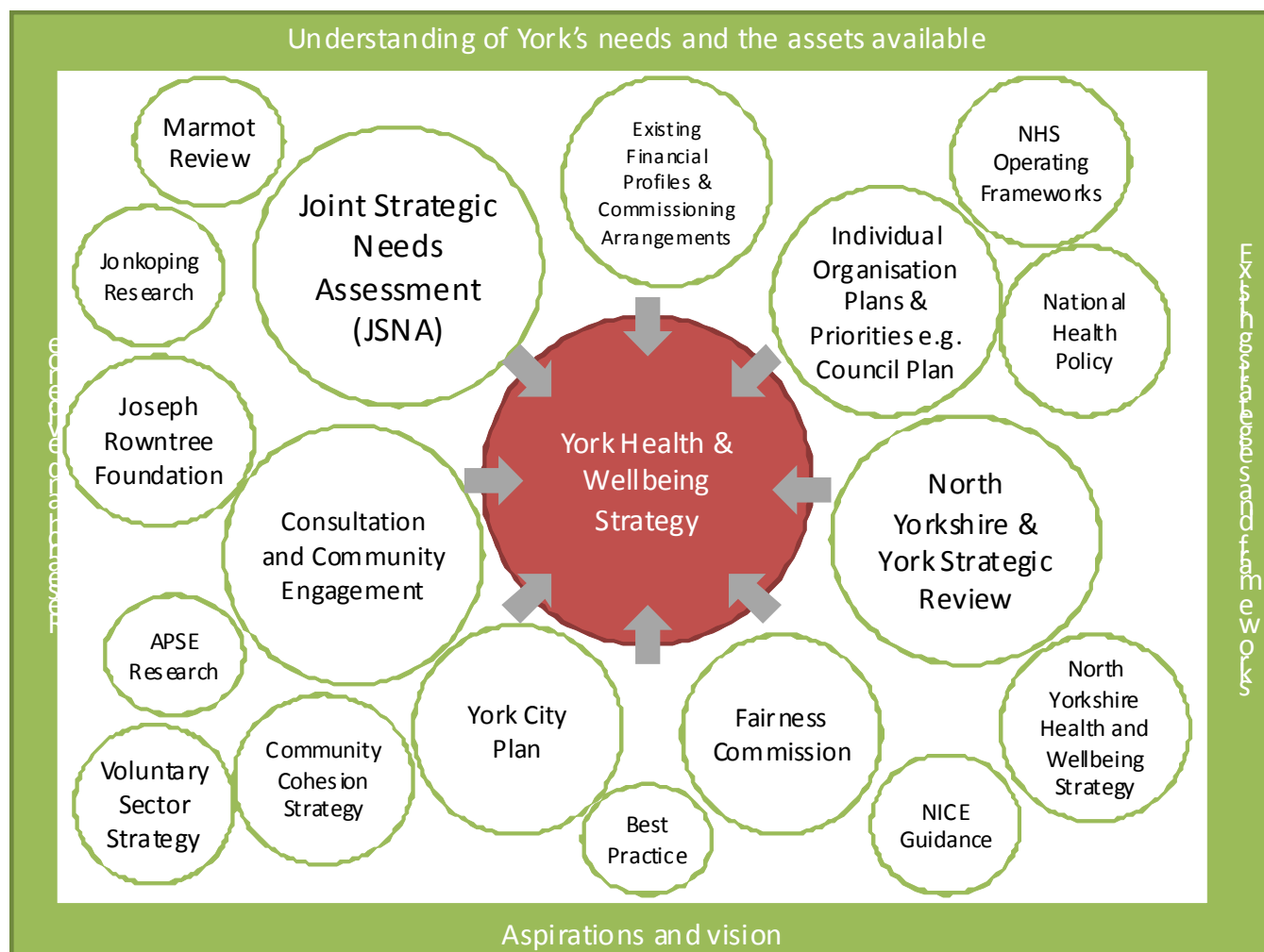
Local authorities throughout the country are developing Health and Wellbeing Strategies this year. In York we want to seize this opportunity and collaborate to develop a strategy that is ambitious and meaningful. A strategy that is honest about the challenges we face and affirms our commitment to pursuing what we believe is most important at this point in time. It should resonate with residents, affect what we do as organisations and ultimately make a genuine difference to people in York.

¹ See Health & Wellbeing Needs in York: A Joint Strategic Needs Assessment

² Based on the World Health Organisation's definition of health

How we have developed our priorities and actions

This strategy relates to and draws upon a wide evidence base including: national and local research, existing strategies and frameworks. The diagram below illustrates some of these:



Our report, 'Health and Wellbeing in York, Joint Strategic Needs Assessment 2012' (JSNA) is a comprehensive assessment of the health and wellbeing needs in the City. Our understanding of need is a fundamental building block for deciding what we will do to improve health and wellbeing, so this assessment has played a large part in defining our principles and actions. You will see evidence from the JSNA referenced within each of the priority sections.

The four key points that emerged from the JSNA were:

- Our population is ageing and will place increasing demands on health and social care services
- Health and wellbeing inequalities exist in the city and must be tackled
- We need to know more about the mental health needs of our population
- The importance of intervening early and give children and young people the best possible start in life

We want to learn from successful interventions and national research which will help us address the challenges we face in York. The report 'Fair Society, Healthy Lives' (The Marmot Report) is extremely influential in developing an evidence-based approach to addressing the social determinants of health. The report shows the relationships between social and economic status, poor health, educational attainment, employment, income, quality of neighbourhood and a range of other factors experienced throughout life. We fully support and commit to this holistic approach to tackling inequalities and providing support across the life course.

Finance and resource

As we know, these are very difficult economic times. Councils, health services and the independent and voluntary sector are facing tough decisions about how best to use ever-decreasing funding and resources. An Independent Review of Health Services in North Yorkshire and York was published in 2011. It highlighted the precarious financial position of North Yorkshire & York Primary Care Trust which was overspending by several million pounds every year³ and the additional efficiency savings required to meet the increased demand for services. The review made recommendations about how health services in North Yorkshire and York could manage this and operate within a sustainable financial framework while continuing to meet the health needs of the area. This strategy builds on the recommendations in the Review. The North Yorkshire Review 2 is being carried out to continue this work. Both reviews will have implications for our strategies and plans for the future.

The 'Local Account for Social Care'⁴ highlights the growing numbers of older people accessing social care in the population, together with more people with complex needs and learning disabilities living longer are increasing the strain on social care budgets across the country. The Local Government Association conducted a modelling exercise that predicts a 29% shortfall between revenue and spending pressures by the end of the decade. More stringent financial times and our commitment to improving health and wellbeing outcomes for the residents of York, means our challenge for the coming years is clear: ensuring the availability of high quality care in financially challenging times.

³ A proportion of this overspend will be transferred to the Vale of York Clinical Commissioning Group

⁴ Local Account for City of York Adults Social Care Services for 2012

Our long term commitment to engagement

In identifying our priorities and what we will do to achieve them we have listened to the experts within our City: our residents, community groups, communities of interest, frontline staff, and management teams, elected Members and commissioners and providers across all sectors. We have asked what they felt would make the biggest difference to improving health and wellbeing in York and helping us to achieve our priorities.

We consulted extensively. We used online questionnaires, group workshops and one-to-one meetings. We used these views to develop principles and actions for our five priorities. The Health & Wellbeing Board then considered these and committed to delivering a number of them over the next three years.

We want to emphasise that our engagement with staff, residents and people who use our services is not a one-off event. We are committed to involving people in planning and designing health and wellbeing services and provision in the long term. Our aim is to 'co-produce' more health and wellbeing services and pathways to care and support. By co-production we mean we want to work with people as equal partners to improve services and respond to challenges, making decisions together. We believe that the people most affected by a service are best placed to help design it. We also recognise that residents and communities already have a range of resources available, both intellectual and physical, and that bringing our resources together we can deliver services *with* rather than *for* people and their families. Early evidence suggests this approach is a more effective way to delivering better outcomes and more sustainable services, often for less money⁵.

We must acknowledge that co-producing health and wellbeing services is challenging, but it is not impossible. We want to learn from others who have achieved this for example the improvements to health care and patient experience in Jonkoping, Sweden⁶. In delivering this strategy we will take every opportunity to co-produce health and wellbeing services, enabling our residents and people who use our services to identify problems and propose solutions, rather than being passive recipients of services. We believe that programmes such as 'Think Local Act Personal' will help us achieve this by focusing on the way communities can help support each other and by increasing the uptake of personalisation, which is central to communities and their health and wellbeing.

During 2013 we will develop a health and wellbeing engagement strategy which will outline the steps we will take to improve engagement with residents, people who use our services, staff and partner organisations in planning and delivering services. Recent research in York carried out by De Montford University and the Association for Public Sector Excellence will inform this engagement strategy and will lead to new ways of working. We are currently exploring how community health champions can help us achieve more effective engagement.

⁵ Based on Nesta Lab and the New Economics Foundation co-production research

⁶ See 'Charting the Way to Greater Success: Pursuing Perfection in Sweden'

Our vision

Our vision is for York to be a community where all residents enjoy long, healthy and independent lives. We will achieve this by ensuring that everyone is able to make healthy choices and, when they need it, have easy access to responsive health and social care services which they have helped to shape.

What we will do to achieve our vision

To achieve our vision we will do many things, for many people, in different ways, through a number of organisations and approaches. However, we want to avoid the pitfalls of trying to take action on everything at once. Our strategy is not a long list of everything that might be done it instead focuses on key issues and actions we can do together, which will make the biggest difference.

Although our strategy does not address every health and wellbeing related issue, that does not mean we will not continue to work to address them. We will, for example, still continue to deliver the Valuing People Now agenda, work to improve air quality through sustainable transport programmes, champion the vital work of unpaid carers and provide employment opportunities for those with long-term disabilities. However, so we can make a real difference, we will focus on a smaller number of issues that we believe are the most important to address at this time. Health and wellbeing needs change over time, and so will our priorities. We will review this strategy on a regular basis to reflect these changes, and to ensure we continue to focus on what is most important at any point in time. We want to develop more integrated approaches to benefit our residents' health and wellbeing. We cannot achieve our priorities as separate organisations, we have to work together and do this better.

We have therefore agreed the following priorities, which will underpin our work to improve health and wellbeing in York.

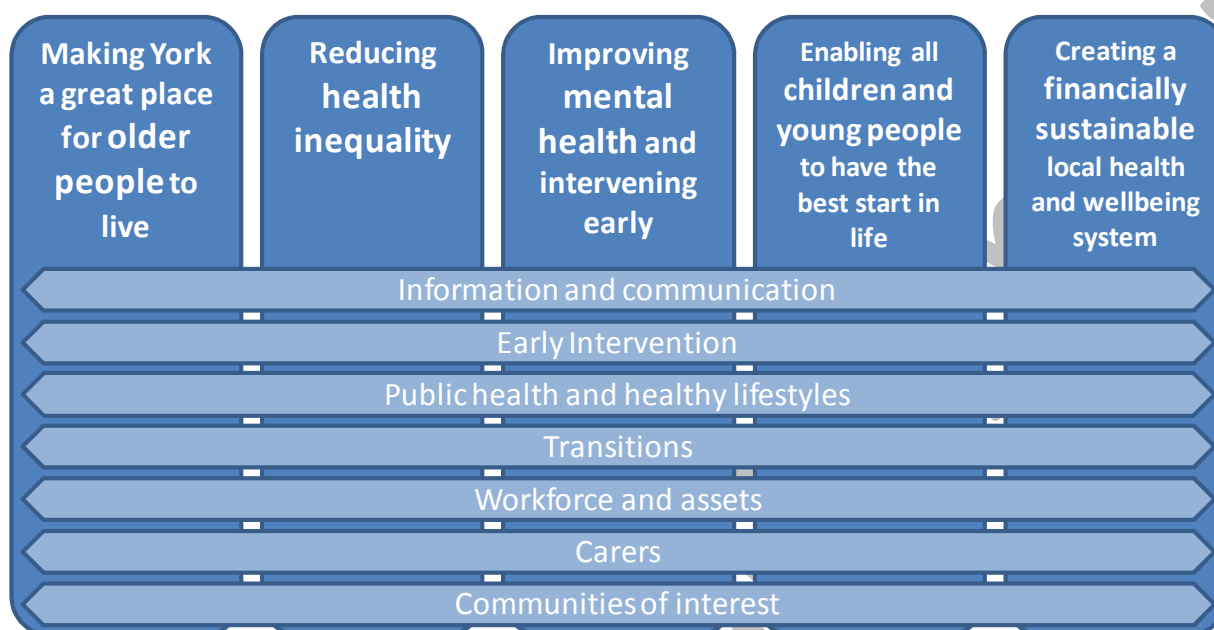
- 1. Making York a great place for older people to live**
- 2. Reducing health inequalities**
- 3. Improving mental health and intervening early**
- 4. Enabling all children and young people to have the best start in life**
- 5. Creating a financially sustainable local health and wellbeing system**

This strategy will explain the priority areas in more detail – why they are important, what our principles are for each and what we will do to achieve them. But first, we will start by introducing a number of cross-cutting themes, principles and actions that will guide all of our work.

Cross-cutting themes, principles and actions

In developing this strategy we identified a number of themes, principles and actions that are relevant to all our work and the delivery of our five priorities. These themes are illustrated in the diagram below.

Cross-cutting themes and our priorities



Principles that will guide all of our work and the delivery of our five priorities:

We will:

- Put partnership working across organisations, agencies and sectors at the heart of delivering this strategy. We will overcome barriers together, take bold decisions where needed, lead the improvement and integration of York's health and wellbeing system.
- Keep a relentless focus on reducing health inequalities, assessing the impact on health inequalities for every decision we make and every policy we introduce.
- Acknowledge the affect housing has on health and wellbeing. Fuel poverty, overcrowding, noise, fear of crime, can have adverse affects. Housing however can prevent ill-health and protect health, through adaptations, electrical safety, insulation, and by providing privacy and space.
- Trust residents and people who use our services to understand the challenges we face in providing and commissioning services in the current financial climate. We will encourage people to help design, plan and deliver better health and wellbeing services.

- Increase the choice for people who use our services and the control they have over them. For example, how they want their care or support delivered, from where and by whom.
- Recognise and promote the vital role of unpaid carers who contribute so much to health and wellbeing in York.
- Champion the role of the voluntary sector and the value its strength, diversity and knowledge brings in improving the health and wellbeing of our residents.

Actions - over the next three years the Health and Wellbeing Board will:

- 1. Through our ongoing JSNA undertake further research and share intelligence to get more of an insight into the health and wellbeing of those with the poorest health outcomes.**

The JSNA recommends that we increase our understanding of the following groups: looked after children, young people who leave care, carers (including young carers), people who have disabilities, people with mental health needs, older people, offenders and people who misuse substances. The services we commission and provide will have an increased impact. They will be provided to the right people from the right place and will better meet people's needs.

- 2. Create a shared resource collating existing health and wellbeing information, to join up directories for activities, services, or organisations in York, and design appropriate ways of using this which is fit for purpose and user-friendly.**

The content of the various health and wellbeing websites from a number of health and wellbeing agencies and organisations will be better coordinated and consistent. Information will be easier to understand and easier to access.

- 3. Create a health and wellbeing passport which is recognised by and used across all partners and sectors and we will join together existing health passports relevant to specific conditions.**

The passport will provide a reliable picture of an individual's health needs. Held by individuals, the passport will allow information about their health needs to be better shared, communicated and understood when they are accessing health services.

- 4. Deliver a workforce development programme to empower and equip staff across health and wellbeing organisations to implement this strategy.**

This programme will, for example aim to: improve engagement with our residents and people who use our services, helping us co-design and co-produce more services; Make Every Contact Count, by encouraging frontline staff to 'ask the next question'. Looking wider than single issues, staff will use every opportunity to talk to people about improving their health and wellbeing. This will help tackle the causes of poor health and wellbeing as well as the symptoms.

5. Commission a joint engagement strategy across all health and wellbeing organisations and sectors represented on the Health and Wellbeing Board.

Residents and people who use health and wellbeing services will have increased influence over planning and designing health and wellbeing services and delivering this strategy.

6. Create a joint communications plan, coordinating citywide health and wellbeing campaigns which often occur separately through individual organisations.

Individuals and communities will be better informed about how they can improve their own health and wellbeing. Messages will be more coherent and consistent across a number of health and wellbeing organisations.

7. Encourage health and wellbeing organisations and agencies to explore the adoption of the living wage.

Families will be lifted out of poverty and staff will be more motivated to deliver higher quality care and support. Organisations will see an improvement in staff recruitment and retention.

8. Support the city's housing strategy which cuts across a number of principles and actions within this document. Its recommendations include:

Housing provision - affordable homes and making best use of existing housing stock;
Housing conditions- promoting 'healthy homes' which are safe and secure, improving standards, working with landlords, tackling fuel poverty and reducing carbon emissions;
Older households- meeting the needs of an ageing population, adaptations, wrap-around services such as handyman provision, warden call, and opportunities for volunteering;
Homelessness - homelessness prevention, meeting the anticipated increase in the demand for advice and services following the welfare reforms, dedicated provision for homeless young people which combine secure housing with work related training and providing supported housing as a pathway to independence for people with mental health problems.

Delivering our cross-cutting actions:

The Health and Wellbeing Board will delegate the responsibility to deliver these actions to the four strategic partnership boards that sit below it.

As these principles and actions are cross-cutting the Health and Wellbeing Board will expect to see them reflected in the delivery plans for each of the strategic partnerships. To ensure this, the Health and Wellbeing Board will approve the delivery plans for the four strategy partnerships. Specific actions will also be delegated to particular working groups or task groups as appropriate.

Please see the 'Delivery and Monitoring' section on page 36 for more information.

Making York a great place for older people to live

Why 'making York a great place for older people to live' is important

Older people make a huge contribution to the life of our city: to our local economy as experienced and committed workers and to our communities. They are often at the heart of families, volunteering, caring, mentoring and supporting children and young people.



Older people already form a significant part of our community in York. By 2020, the over-65 population is expected to increase by 40% and the number of people aged over 85 years is expected to increase by 60%. A growing number of older people will also be living alone.

As we get older, we become increasingly vulnerable, more at risk of social isolation, and more likely to have complex health problems. The JSNA estimates that around 1 in 10 older people experience chronic **loneliness**. Adverse affects on health can include increased self destructive habits and an increased likelihood of not seeking emotional support. Loneliness can affect immune and cardiovascular systems cause sleeping difficulties and can severely affect people's mental health.

The JSNA estimates that **dementia** will affect an additional 700 people in York over the next 15 years. Given the population projections and the increased incidence of dementia with increasing age, we need to plan for this potential need.

With increasing demands on health and social care services in York and diminishing budgets the current system of support will soon become unaffordable. The JSNA specifically recommends a community-based approach in managing **long-term conditions** and **preventing admissions to hospital**. It recommends continuing support for **physical activity** initiatives across the whole population with priority given to vulnerable groups.

Principles which will guide our work and resources to deliver this priority

We:

- Value the positive contribution that older people make to living in our city and the importance of prevention work to sustain and improve their health and wellbeing. We want to ensure the needs of older people are central to our strategies, plans and commissioning decisions.
- Recognise the contribution of the voluntary sector, older people and carers in 'making York a great place for older people to live', especially for the following key issues:
 - Supporting people with **long term conditions to live independently**
 - **Preventing admissions to hospital**
 - Encouraging **physical activity**
 - Addressing **loneliness** and social isolation
 - Preparing for an increase in **dementia**
- Support a shift towards community-based care, so people can access treatment or support within their own community or at home, rather than having to be admitted to hospital, residential or nursing care.

We know people prefer to be treated this way, and the health benefits of doing so, however we do not underestimate the challenge of changing the system. A consequence of providing more treatment and care at home will be to reduce the number of beds that are needed in hospitals. We want to reassure and remind people of the benefits of providing care closer to home.
- Support approaches that facilitate communities to develop their capacity, to design and develop their ideas and solutions to reduce the loneliness and isolation of older people. We understand that strong communities can help alleviate the loneliness and isolation experienced by some of our older residents.
- Advocate more choice and control for people over their care and support, particularly at the end of their lives about where they wish to die.
- Value the knowledge, strength and diversity of our voluntary sector and recognise the extent to which their support and services contribute to improving the health and wellbeing of our older residents.
- Will ensure that the needs of older people are considered in our decisions about planning and improving the city's infrastructure so that older people have better access to social support through transport and technology.

- Encourage a creative approach to deal with dementia that challenges standard practice and routine pathways. This will help ensure that assessments and care are based on individual need and tailored appropriately.
- Learn from valuable research and evidence, for example, the Joseph Rowntree Foundation projects 'Dementia Without Walls' and 'Neighbourhood Approaches to Addressing Loneliness' and ensure that our policies, strategies and decisions are influenced and informed by this learning.
- Embrace the development of new technologies and the benefits that these innovations can bring to responding to a number of health and wellbeing issues, sustaining and improving health and wellbeing, for example creative solutions to addressing loneliness and social isolation.

A significant amount of health and wellbeing work is already underway, for example, creating state of the art facilities and accommodation for older people and increasing the take up of personalisation. We will reference this work, ensuring the learning and recommendations effect our strategic direction.

Actions - over the next three years the Health and Wellbeing Board will:

Prevent admissions to hospital

Support people with long term conditions to live independently

1. Set up Neighbourhood Care Teams across the City and explore other options which support people in their transition from hospital to home.

Neighbourhood Care Teams are teams which bring together NHS, local government, independent and voluntary sector providers around the 'neighbourhood' of a GP practice. The aim is to provide patient-centred, multi-disciplinary, integrated and streamlined care closer to a patient's home.

- Specific attention should be given to embedding independent and voluntary sector organisations into the working practices and ethos of these teams and ensuring there is coordination with neighbourhood working models in the City of York Council.
- They should be carefully evaluated as they are set up and if successful given long-term commitment, for example by pooling budgets across health and social care organisations.
- This may require de-commissioning acute provision and commissioning more community-based responses to respond to long term conditions and prevent admissions to hospital.
- To support this work, an Adult Commissioning Manager will be jointly appointed between Vale of York Clinical Commissioning Group and the City of York Council, with a formal link to York Council for Voluntary Services.

The result of this work will mean that more people will be supported in their own homes to manage their condition. This will help prevent hospital admissions for people with long term conditions and aid the transition back home when discharged from hospital. A multi-

disciplinary team will be able to provide more person-centred, coordinated care and support.

2. Provide weekly cross-sector case reviews for patients who have been in hospital over 100 days (Or other appropriate threshold)

- For this to be successful, staff attending case reviews will need to be given the autonomy to make decisions about resource allocation and establish pragmatic solutions that work for patients.
- This will help identify if more effective support can be provided for these people and avoid unnecessarily long stays in hospital.

As well as using this process to provide more effective care and cheaper care for individuals, this should be a learning environment to inform wider system change.

Address loneliness and social isolation

3. Work together to understand the factors that contribute to loneliness and what communities and organisations can do to alleviate this.

- We will learn from the Joseph Rowntree Foundation research 'Neighbourhood Approaches to Loneliness'. Once we understand the issues and challenges and how they might be addressed we will support the implementation of these initiatives.
- One approach could be an inter-generational volunteering programme, working with the 'Volunteering York' partnership. This helps tackle isolation and promotes inclusion within communities. It can increase understanding between generations, tackling stereotypes and it can lead to employment opportunities for some volunteers.
- Oliver House provides an opportunity to increase the coordination of the voluntary sector and provide community based solutions to loneliness and isolation.

4. Encourage investment in services which support older people who are isolated to participate in the social groups or community activities that are available in York.

- Older people could benefit from volunteers accompanying them to the first few sessions of a group/activity, building up confidence to participate longer term.
- Increased participation in groups or activities will support older people to feel less isolated, with the potential to improve their physical and mental health.

Encourage physical activity

5. Explore how a single social prescribing programme which recommends exercise, social activity or volunteering can be established city-wide.

- This builds on an existing programme which recommends exercise and is recognised by health professionals.
- Longer term this approach could be embedded within Choose and Book.
- Social prescribing helps tackle loneliness, depression and it improves mental wellbeing as well as reducing the demand for health services⁷.

⁷ Based on evidence from the HEAL programme in York and the HALE project in Bradford.

Prepare for an increase in dementia

6. **Deliver a joint communication campaign across organisations on the Health and Wellbeing Board focused on how to spot the early signs of dementia, how to respond and what support is available and developing as part of becoming a 'Dementia Friendly City'.**
 - This will be supported by dementia training and support for the health and wellbeing workforce as part of the Adult Care Workforce Strategy
 - The workforce will feel more confident and supported in their work, which will improve the quality of care they deliver.
7. **Undertake a review of the use of medication and how it is assessed in residential and nursing care, especially psychotropic drugs and medication for people with dementia.**
 - This will help ensure that the use of medication is suitable and appropriate for individuals at that point in time and that a wider range of options are explored to manage long term conditions - medication can be very effective but it is not the only option.

Other actions to 'Make York a great place for older people to live'

8. **Develop an end of life policy across health and wellbeing partners, mapping current processes and re-commissioning.**
 - We want to ensure that GPs are supported to offer patients and their families / carers the best end of life pathway, which may mean staying at home to die peacefully and not being admitted to hospital. People will have more control and choice about where they want to die.
9. **Encourage care sectors to adopt the living wage and set timescales to reflect this in how we commission contracts.**
 - Recruitment and retention of staff will be improved as well as their quality of work. A number of families will be lifted out of poverty⁸.
10. **Support the implementation of the Adult Care Workforce Strategy (2012-2015) across care sectors for paid staff which supports joint workforce development initiatives.**

We want to ensure staff are aware of the contribution they can make to:

 - Supporting people with **long term conditions to live independently**
 - **Preventing admissions to hospital**
 - Encouraging **physical activity**
 - Addressing **loneliness** and social isolation
 - Preparing for an increase in **dementia**

We want to raise awareness of the care profession and celebrate achievements across the workforce and support the introduction of a paid carers network with opportunities for mentoring support.

⁸ Taken from learning from the London Living Wage.

Delivering the actions for the priority 'Making York a great place for older people to live':

The Health and Wellbeing Board will delegate the responsibility to deliver these actions to the Older People and Long Term Conditions Partnership Board which will sit below.

The Health and Wellbeing Board will expect to see the principles and actions within the partnership board's delivery plan before it is approved. The partnership board however will have some scope to further define these actions before their implementation. The partnership board will also make recommendations to the Health and Wellbeing Board to influence our strategy for older people and long term conditions.

Please see the 'Delivery and Monitoring' section on page 36 for more information.

Working document

Reducing health inequalities

Why 'reducing health inequalities' is important

There is a growing evidence base surrounding health inequalities and the scale of impact that social issues have on our health outcomes.

The Marmot review 'Fair Society, Healthy Lives' evidenced how health inequalities can be reduced by addressing the social determinants of health – our environment and culture, our living and working conditions, our relationships and communities and our lifestyles.



The JSNA identifies that health inequalities are prevalent within York. The recent work of the Fairness Commission highlights the links between low income and poorer health outcomes. Economic growth and creating opportunities for employment increase income, improving health outcomes.

People living in some areas of York can expect to live on average 10⁹ years less than other York residents if they are male or 3.5 years less if they are female. We believe this is deeply unfair, and jars against our vision for *all* York residents to be able to enjoy long, healthy and independent lives.

There are clear links between other types of **deprivation** and poor health outcomes, so it is the same areas and communities where there are more people experiencing a range of issues, from substance misuse and unemployment to mental health problems and long-term health conditions.

To reduce health inequalities therefore requires us to address both the causes and effects of these complex issues around deprivation in particular communities and areas of York. The JSNA recommends that we have a better understanding of how people **access services**, so we can ensure services are in the right place at the right time.

Smoking, alcohol use and obesity have a significant impact on the health of our residents. The JSNA recommends that established programmes aimed at **reducing the smoking prevalence** in York are maintained and built upon. Consideration should be given to **targeting specific groups**, such as young people, pregnant women and routine and manual occupational groups.

⁹ Figures rounded to nearest 0.5 years.

Principles which will guide our work and resources to deliver this priority

We will:

- Recognise and support the contribution of the workforce, voluntary sector, communities and partnerships in reducing health inequalities:
 - **Targeting resource** where it is needed most
 - Tackling **deprivation and addressing complex issues**
 - Improving **access to services** and supporting **community-based initiatives**
 - Promoting **healthy lifestyles** and behaviours
- Use the Marmot framework as a holistic approach to reducing health inequalities and promoting wellbeing across the life course.
- Consider the impact on health inequalities in every decision we make and every policy we develop, ensuring we do not widen the gap further.
- Encourage the allocation of resources to where they are needed most, particularly those areas or groups of people who suffer the poorest health outcomes.
- As organisations, work in an integrated way with individuals and communities who suffer poorer health outcomes, understanding the complex and cross-cutting nature of issues relating to health inequalities, many of which are rooted in wider social factors. We will endeavour to understand and address the key issue or issues which can act as a catalyst to improving broader outcomes, rather than trying to solve individual problems as separate organisations.
- Support a range of community based health and wellbeing approaches that work intensively with residents who experience poorer health outcomes, assessing their potential to improve health and wellbeing at community levels in the longer term.
- Work together to ensure services are being provided where they are needed most, using the assets we have more flexibly to better meet local need.
- We support a smarter approach to communicating with our residents and sharing health and wellbeing messages.
We recognise that traditional methods of communication are not appropriate for some people and we need to explore new, innovative methods that better convey health and wellbeing information to our residents, people who use services and their families.
- We acknowledge and value the difference that schools and children's centres can make in tackling inequalities, for example - their engagement with children and parents, educational attainment, and healthy food initiatives.

- Health and wellbeing are multi-faceted and complex concepts, therefore a range of approaches and interventions are required to address the determinants of health. This is reflected in our actions.

Actions - over the next three years the Health and Wellbeing Board will:

Target resource where it is needed most

- 1. Steer investment in health improvement programmes that offer bespoke interventions that demonstrate an improved health outcomes.**
 - We want to ensure health improvement programmes are where they are needed most to improve the health and wellbeing of our residents who experience lower levels health and wellbeing, for example, lone parents, homeless young people and care leavers.

Tackle deprivation and address complex issues

- 2. Champion a joint approach to addressing complex, interlinked issues that a number of families experience in our city, through our work with troubled families.**
 - This work has been extremely successful in supporting families through complex issues, which no one agency or discipline can resolve. We would like more health professional resource allocated to these programmes to support more families with health specific issues.
- 3. Adopt a joint approach to community development in deprived areas of York, where communities define their own issues and how they can address them.**
 - Stronger communities can offer more supportive environments, where more people care for each other. Giving communities more control over their lives and their wellbeing can be improved, for example, confidence and skills.
- 4. All organisations on the Health & Wellbeing Board will commit to exploring the implementation of the Living Wage, and encourage others in the city to do so.**
 - The Living Wage could lift a number of families in York out of poverty. Recruitment and retention of staff is improved and quality of work increased.
- 5. Organisations on the Health and Wellbeing Board commit to running supported employment programmes within their organisations and if successful, encourage other organisations or businesses to follow.**
 - We will also support volunteering programmes which offer that step up to employment and work which helps sustain people in employment or training. We absolutely recognise the benefits of employment and training on health and wellbeing.

Improve access to services and support community-based initiatives

- 6. Encourage investment in community based programmes which increase residents' income and/or reduce their expenditure, such as debt, benefits or employment advice. We support the recommendations in the Financial Inclusion Strategy and acknowledge that this work is continuing.**
 - These programmes can lift a number of children and families out of poverty; they can be a stepping stone to employment. Additional income is often spent on heating, care and food. Not only does this prevent ill-health, and benefit the local economy, it also reduces demand on pressurised health services.
- 7. Explore and identify opportunities where we can take a range of services to residents who would benefit most from this. This includes:**
 - The use of the Community Stadium as a hub for health and wellbeing and a base for outreach services, ensuring we reach people who experience lower health outcomes.
 - The use of existing buildings within communities to join up, co-locate or extend services to increase flexibility and accessibility, for example, extending the range of support available from GP surgeries or using pharmacies to provide basic health checks and signposting.
- 8. Recruit, train and support health and wellbeing champions from within those communities experiencing poorer health outcomes. They will signpost and provide health and wellbeing information. We will learn from recent research on this subject area in York and put these findings into practice. We acknowledge the role of 'HealthWatchers' who are already working in some areas of the city.**
 - Health and wellbeing messages are often more effective when they are heard from people already known or from people within that community. Signposting is one method of early intervention, helping people access the right support at the right time, preventing their health from worsening. It is a great way to promote the support that is already available in communities.

Promote healthy lifestyles and behaviours

- 9. Undertake targeted work to investigate and address health behaviours and lifestyles in York, focused on smoking, alcohol use and obesity.**
 - Behaviours and lifestyles have a significant impact on health. We want to work with people in our communities to encourage healthier lifestyles and make healthier choices. [Insert findings from 'intervening in the social determinants of health']
- 10. Establish an effective York model for tobacco control (it is currently across both York and North Yorkshire).**
 - This includes establishing a York Tobacco Alliance and implementing the NICE guidance 'Quitting smoking in pregnancy and following childbirth'.

- Smoking is a major contributor to ill health. A more joined-up approach to tackling smoking in York can lead to improved health outcomes.
- 11. We will undertake joint campaigns across all partners and use our understanding of communities and individuals to target communication. We will adopt innovative approaches which actively engage more people in health and wellbeing issues.**
- We want to increase the consistency of messages that go out from various health and wellbeing organisations to increase awareness and understanding of health issues. By actively engaging more people, our residents and people who use our services will be better informed and will be better equipped to maintain and improve their own health and wellbeing.

Delivering the actions for the priority ‘Reducing Health Inequalities’:

The Health and Wellbeing Board will delegate the responsibility to deliver these actions to the Tackling Deprivation and Health Inequalities Partnership Board which will sit below.

The Health and Wellbeing Board will expect to see the principles and actions within the partnership board’s delivery plan before it is approved. The partnership board however will have some scope to further define these actions before their implementation. The partnership board will also make recommendations to the Health and Wellbeing Board to influence our strategy for reducing health inequalities in the city.

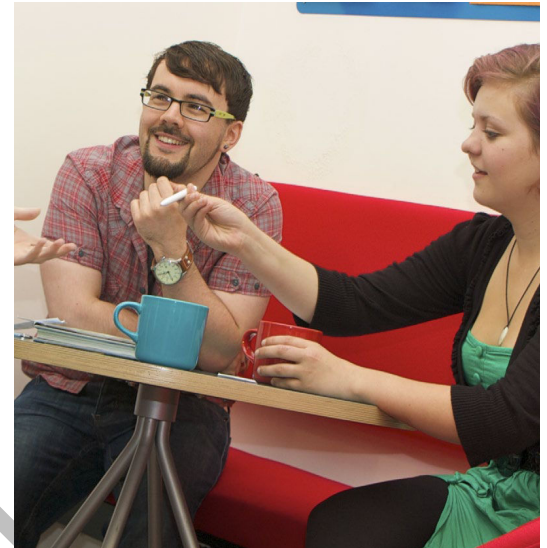
Please see the ‘Delivery and Monitoring’ section on page 36 for more information.

Improving mental health and intervening early

Why 'improving mental health and intervening early' is important

It is estimated that at any one time there are around 25,000 York residents experiencing various kinds of mental health problems, ranging from anxiety and depression to severe and enduring conditions including dementia and schizophrenia. Furthermore, 10% of 5 to 15 year olds in York are estimated to have a diagnosable mental health disorder and, with people living longer, an increase in dementia is forecast.

Much of this can go under the radar, and we need to **raise awareness and improve our understanding of the full range of mental health needs** in the City.



Where possible, we want to be able to intervene early to address or prevent mental health problems and not just treat more severe conditions. We know this is better for the wellbeing of people in York and their families and is more cost-effective.

The JSNA recommends that active consideration is given to joining up more closely the children's and adults' mental health agendas and work streams in order to support a closer focus on **early intervention, prevention and transition**. The Children and Young People's Mental Health strategy (CAMHS) is a key local policy driver for this priority. The JSNA also highlights the need to provide a range of comprehensive **community based support**, early intervention and services for individuals with mental health problems.

Housing has a significant impact on all our health and wellbeing. The JSNA specifically recommends that the housing needs of people with mental health conditions do need to be considered in the context of service planning and high quality provision. We need to ensure that health and wellbeing services, support and provision **promotes choice and control** embed for people who are have or are recovering from mental health conditions.

Principles which will guide our work and resources to deliver this priority

- Recognise the work that the workforce, the voluntary sector, communities and carers make to 'improving mental health and intervening early', especially for the following key issues:
 - **Increasing understanding of mental health needs** across the city
 - **Raising awareness** of mental health and **reducing stigma**
 - **Intervening earlier** and supporting **community-based initiatives**
 - Ensuring service planning and provision promotes **choice and control**
- Seek to gain a better understanding of mental health needs in York, and the services that are currently available. We will make sure our services are fit for purpose and if necessary redesign them to better meet mental health needs locally.
- Look to raise the profile of mental health and remove the stigma attached to it.
- Ensure that when we plan services, this takes account of the mental health needs of the ageing population, with particular reference to social isolation, loneliness and the growing number of people with dementia.
- Endeavour to create supportive communities which enable good mental health; where people have regular contact with one another, friendships can be developed and people are there to support each other. This will help prevent people from developing mental health conditions or requiring services in the first place.
- Improve coordination between the broad range of mental health support available in York across sectors, and which draw from both medical and social models of health and wellbeing. Since we know that mental health conditions are often complex, long term and related to a range of factors, we will support the development of longer term support programmes and more joined-up working between services.
- Work together to join up children's and adult's mental health agendas to better support early intervention work and the transition between services.
- Support a model of early intervention and prevention where possible, providing and effectively referring to a range of alternative support (instead of medication or intensive interventions) for people with low-level mental health conditions.
We acknowledge that there are different levels of mental health needs, and that different support and models of care should be used appropriately.

- Recognise that although the 'recovery model' can benefit those with mild or moderate mental health issues, there are approximately 400 people in the city with severe or enduring mental health conditions who need more intensive support.

Working document

Actions - over the next three years the Health and Wellbeing Board will:
Increase understanding of mental health needs across the city

- 1. Ensure that all agencies and practitioners record and provide accurate data about mental health and can share this across relevant partners (on a confidential basis, as appropriate).**
 - We need to know more about mental health needs. Improving collection and recording of data will help increase our understanding of mental health, particularly lower level mental health, informing and improving mental health services.

Raise awareness of mental health and reduce stigma

- 2. Commit to a joint annual communication campaign for mental health: awareness of it, how to respond to it, and how to promote mental wellbeing.**
 - This will improve the consistency of information across the city. As our understanding of mental health in the city increases, we can target these campaigns so they reach the right people.
- 3. Deliver a joint workforce programme for city employers for 'well at work' training for managers.**
 - This will increase awareness of mental health and stress in the workplace - how to identify problems and signpost to the appropriate support. It will also focus on promoting wellbeing at work – how to manage stress positively and achieve good mental health.

Intervene earlier and support community-based initiatives

- 4. Commission more mental health first aid training in York – either from the existing national programme or develop a local model.**
 - Support will be offered earlier and at a lower level, preventing issues from worsening and avoiding higher level interventions further down the line.
- 5. Across sectors, we will jointly map the support and pathways available for people with mental health conditions, including thresholds and eligibility criteria for services.**
 - This will identify opportunities where we can, across the system, intervene earlier. Following this work we anticipate re-commissioning support to ensure we are providing the right pathways of care and support for mental health services.
- 6. Explore how a single social prescribing programme which recommends exercise, social activity or volunteering can be established city-wide.**
 - This builds on an existing programme which recommends physical activity and is recognised by health professionals.
 - Longer term this approach could be embedded within Choose and Book.

- This community-based approach offer alternative support which increases confidences, self esteem, and inclusion. It helps tackle loneliness and depression and reduces the demand for health services¹⁰.
- 7. Support schools to raise awareness of mental health amongst young people and recognise the work that has already begun to achieve this.**
- This includes bringing in mental health expertise to complement Personal, Health and Social Education within the curriculum and refining it so it is more relevant to young people's mental health issues, i.e. eating disorders and self-harm.
 - Young people will have an increased awareness of mental health – reducing stigma, improving the response to mental health issues and promoting mental wellbeing.
- 8. Commission more community based support and services for individuals, especially early intervention and prevention work¹¹.**
- This includes: commissioning more counselling services and additional services to support 16-25 year olds. This will enable earlier intervention, and allow us to explore and address specific issues relating to young people moving into adulthood.
- Ensure service planning and provision promotes choice and control*
- 9. Review our housing policy for people with a mental health condition, this includes looking at our housing stock options and how we can offer more flexible tenure options.**
- Housing has a significant impact on health. It is vital therefore that we promote a range of housing options, appropriate for a range of needs to provide safe and secure living environments to aid recovery.
- 10. Introduce a Standardised Approach to Assessment (SAA) for Mental Health. All partners on the Health and Wellbeing Board will agree to use the mental health recovery star.**
- This assessment could be a 'passport', following the service user to a range of services and reviews. This will avoid several different assessment tools being used every time someone uses a different service. It can be used by clinicians and non-clinicians.
- 11. Provide a more fit for purpose Place of Safety for York and North Yorkshire.**
- We will increase multi-agency working to improve how agencies respond to those being detained under the Mental Health Act and agree a coordinated approach and policy for York. We want to ensure that people are treated with respect and dignity. Police custody is not an appropriate Place of Safety – it compounds distress and vulnerability.

¹⁰ Based on evidence from the HEAL programme in York and the HALE project in Bradford.

¹¹ The London School of Economics and Kings College report 'Economic Evaluation of Early Intervention (EI) Services' shows the significant savings that early intervention approaches can make for the NHS.

Delivering the actions for the priority 'Improving mental health and intervening early':

The Health and Wellbeing Board will delegate the responsibility to deliver these actions to the Mental Health and Learning Disabilities Partnership Board which will sit below.

The Health and Wellbeing Board will expect to see the principles and actions within the partnership board's delivery plan before it is approved. The partnership board however will have some scope to further define these actions before their implementation. The partnership board will also make recommendations to the Health and Wellbeing Board to influence our strategy to improve mental health and intervene early.

Please see the 'Delivery and Monitoring' section on page 36 for more information.

Working document

Enabling all children and young people to have the best start in life

Early intervention and tackling inequality are the basis for enabling all children and young people to have the best start in life.



In York there has been an increase in the number of

children who are subject to formal child protection plans. Neglect is the largest single category of child protection plans, often alongside other forms of maltreatment including domestic abuse, physical abuse, and sexual abuse. Many children who live within neglecting families are disadvantaged from early life and encounter social, emotional, behavioural and educational difficulties as they grow older.

In 2010, there were an estimated 4,400 children living in **poverty** in the city. There is a considerable attainment gap between pupils who are in receipt of free school meals and other pupils. In 2011, 10% of York pupils were claiming free school meals, compared to a national average of 18%. The school absence rate amongst pupils eligible to receive free school meals in York was approximately double the rate of those pupils who were not. We know that **education is essential** in improving life chances and opportunity.

Principles which will guide our work and resources to deliver this priority

Eight ways in which we will work to help **all** children, young people and their families to live their dreams:

- **Striving for the highest standards**

York already enjoys some of the highest educational and health outcomes of anywhere in the UK. But we are not complacent, and will continually strive for more. There should be no limits on the dreams and aspirations of any young person in York. This can only come about through positive partnerships with children, young people and their families; together with a skilled, confident and committed workforce.

- **Creating truly equal opportunities**

We will work relentlessly to ensure that no child, young person or community is at a relative disadvantage, removing all traces of discrimination from our systems and our interactions –

with a particular focus on the rising numbers of children from a black and ethnic minority (BEM) background, and on those questioning their sexuality. This principle is as much about celebrating the positive as it is about eliminating the negative.

- **Ensuring children and young people always feel safe**

Safeguarding lies at the heart of all our work, as does ensuring that there are “arenas of safety” at home, at school and in the community. We will continue to make our procedures for raising concerns about a child as straightforward and as effective as possible. We will be sensitive to the possibilities of exploitation or extremism, and will continue to adopt a “zero tolerance” policy for bullying in any form.

- **Intervening early and effectively**

We firmly believe in the principle of investing in “upstream” interventions to prevent costly “downstream” problems. This includes developing responsive mechanisms for supporting particularly vulnerable children, young people and families. It is also about programmes of public health to promote breastfeeding, exercise, healthy eating and good sexual health, whilst also preventing unwanted conceptions, and problems with drugs or alcohol.

- **Working together creatively**

This is about working within and beyond the YorOK partnership to ensure that organisational demarcation never gets in the way of the best interests of children and young people in York. It’s about sharing information, and pooling budgets, so as to develop better services. It’s also about making best use of the changing organisational landscape in both education and health to promote the interests of young people.

- **Treating children as our partners: mutual respect and celebration**

York has always prided itself on its capacity to involve young people. We need to ensure that all services continue to be fully responsive, and that young people’s views are built into the design and delivery of services from the outset. We should lose no opportunity to celebrate their achievements. This principle is founded on respect for children’s rights as enshrined in the UN Convention and recognition that with these rights also come responsibilities. We will continue to work closely with the Youth Council and with School Councils in this area.

- **Connecting to communities and to the rich culture of our great city**

We need to see children as people who live within their communities and as future responsible citizens. York has such a rich heritage, and varied cultural life, and we need to ensure children and young people have multiple opportunities to connect with it. We also need to be sensitive to the fact that different communities have very different needs and aspirations, and that for some people their “community” may be their local area, whereas for others, it may have more to do with cultural identity.

- **Remembering that laughter and happiness are also important**

It would negate the purpose of this principle to expand upon it further!

In addition, there are five specific priorities, based on evidence about where extra help is needed

- **Helping all York children enjoy a wonderful family life**

We have always recognised that children are best brought up in their own family, however that is composed. Where that is not safely possible, we will seek always to ensure that high quality local alternative family settings are available. So we need to ensure we give extra help to any family experiencing particular difficulties, and to continue to support foster families, adoptive parents, and those parents who may be vulnerable in some way (including parents with learning difficulties).

- **Supporting those who need extra help**

We already have evidence of differences in educational and health outcomes for looked after children compared with their peers and – despite some progress – in the attainment of pupils eligible for free school meals or the pupil premium. We also have concerns about the outcomes for young people from the traveller community and for young carers. Finally, we need to do more to help young people with a learning difficulty or disability to find employment after school or university. For all these groups, we need imaginative programmes of support and challenge.

- **Promoting good mental health**

We need to do more work to understand the possible dimensions of the issue here, ie, what is actually needed, and to deliver a range of sensitive and professional services to support young people who have mental health issues. Young people are particularly keen for us to help to remove the stigma around poor mental health.

- **Reaching further: links to a strong economy**

There are two particular areas where the needs of young people interact with the economic health of the city: child poverty, and young people not in education, training or employment (NEET). We need to expand our multi-agency, multi-faceted programme to tackle child poverty and to increase the number of apprenticeships across the city. The raising of the “participation age” during the lifetime of the plan will appear to have removed the problem of “NEET” young people under 18, but as a partnership, YorOK is just as concerned about young adults aged 18-25 who are without work or purposeful activity. We need to help all young people to be “work ready” and to encourage and support young entrepreneurs.

- **Planning well in a changing world**

This priority recognises some particular uncertainties that we know we are going to have to face in the next plan period, for which we need to plan effectively. These include falling demand for secondary school places and, conversely, rising demand at primary level. We

also face unprecedented pressures on our budgets, putting an added premium on ensuring that we spend every penny wisely and that we work together imaginatively to ensure that the total impact of our combined budgets is greater than the sum of the parts. But there are also positives – the health reforms, and the changes to the education system, represent opportunities we should seize.

Delivering the actions for the priority ‘Enabling all children and young people to have the best start in life’:

The YorOK Board has detailed how it will deliver the principles and actions for this priority in ‘Dream Again’, York’s Strategic Plan for Children, Young People and their Families, 2013-2016.

Please see the ‘Delivery and Monitoring’ section on page 36 for more information.

Working document

Creating a financially sustainable local health and wellbeing system

Why 'creating a financially sustainable local health and wellbeing system' is important

In order to deliver this strategy we need to have the right resources in place. Resources and commissioning decisions should be aligned with principles and actions set out in this strategy so we can achieve our priorities and support the health and wellbeing of residents in York both in the short and long term.



Significantly reduced and further reducing public sector budgets, financially challenging times for individuals and increasing demands for a range of health and wellbeing services create a perfect storm for the health and wellbeing system in York to contend with. Taking into account increased demand, it is estimated that budget savings of around 20% will be required across health and local government by 2020.¹² To simply continue what we are doing, let alone additionally investing in our priorities or to make long-term savings, would be a major challenge.

All this, coupled with the urgent need to re-balance the York & North Yorkshire health system which is spending more than is available year on year, make this a pivotal time to create a system which costs less overall but continues to provide excellent care, treatment, support and opportunities for our residents.

Nevertheless, we must remind ourselves that despite the challenges, there are still hundreds of millions of pounds across sectors to support and improve the health and wellbeing of individuals and communities in York – it is our responsibility to maximise what we do with this and invest it wisely.

¹² LGA Funding Outlook for Councils, 2012; King's Fund, 2011

Principles which will guide our work to deliver this priority

We will:

- Through the Health and Wellbeing Board, take ownership of the financial position of the whole health and wellbeing system in York, rather than focus on the performance of individual organisations.
We will ensure we are investing in services that we know will have the biggest impact on improving health and wellbeing. We need to be aware of both the intended and unintended consequences of funding decisions we make and the impact of any subsequent service change. To help us make these decisions we will take a joint approach to budget consultation with residents and endeavour to communicate consistently about the overall financial position.
- Maximise efficiencies between adult social care and health through jointly planning care pathways across sectors and integrating commissioning decisions more closely.
Where appropriate, we will explore opportunities for joint commissioning posts, pooled budgets or lead commissioning arrangements between City of York Council and Vale of York Clinical Commissioning Group to support this more integrated approach.
- We will prioritise system change around care pathways for older people which are the most significant cost pressures and opportunities.
This will address a major strain and will release pressure on services so they are able to function better across the board, benefitting all our residents.
- Support community-based models of care to allow more people to benefit from being supported in their own homes and within their own communities.
We know people prefer to be supported at home, or near home and the significant health and wellbeing benefits this offers – reduced transitions and increased independence. Providing more support at home may lead to a reduction in the number of beds that are needed in hospitals and a change in staffing and equipment provision. We must sensitively reassure and remind people of the benefits of this approach and the need for change. In order to make this system change, we will need to:
 - Create performance frameworks and contracts which reward this more financially sustainable model of care, and share risk appropriately
 - Commission primary, community and social care so that there is sufficient capacity to effectively support people closer to home who would have traditionally required hospital services. We will commission the best services possible, with openness to the possibility that this may not be from statutory providers.
 - Encourage the reduction of hospital referrals through GPs and nursing homes, highlighting other, more fit for purpose services, to refer on to.
 - Promote and encourage self-care where appropriate.

- Be open with the public about the need for change, educating them in dilemmas we face together and trust them to make decisions which benefit the whole population. We will work closely with local media, encouraging them to act with social responsibility, to avoid publicity which could derail this collaborative approach.
- Urge Central Government to adopt its plans for a financially sustainable model for paying for adult social care without delay.
- Allocate our resources to where they are needed most, particularly those areas or groups of people who suffer poorer health outcomes.
- Have a two-pronged approach to reviewing finance and resources – a whole system view but also assessing the effectiveness of our services on a case by case basis. This will give us more flexibility in allocating resource where it is needed and resolving cases where people are ‘stuck in the system’.
- Maximise internal efficiencies through vacancy management and efficiency programmes across the Council and NHS.
- Take a shared approach to assets such as buildings and vehicles, maximising their use between partners, and selling or putting to other use assets we don’t need as a result.
- Maximise the use of voluntary sector services where they provide excellent value for money and results.
We will stimulate a stronger market by supporting voluntary sectors organisations to work together or scale up to bid for larger contracts. We will tender contracts to enable voluntary sector organisations to be competitive against larger statutory or independent providers.
- Trust patients and residents to understand the complex dilemmas we face and allow them to shape solutions, for example, through the increased co-production of services.

Delivering the priority ‘creating a financially sustainable local health and wellbeing system’

The Health and Wellbeing Board will deliver this priority as achieving this requires whole system change. The Health and Wellbeing Board will be supported by task groups, for example, finance officers who will support health and wellbeing organisations to understand each others’ budgets, budget plans over the next 3 years and how this will affect the health and wellbeing system and individual organisations.

Please see the ‘Delivery and Monitoring’ section on page 36 for more information.

Links to city wide plans

It is important to note the close links between the delivery of York's Health and Wellbeing Strategy and other significant city-wide plans that have a major impact on the health and wellbeing of our residents. These include the City Action Plan and the recommendations within the Fairness Commission final report.

City Action Plan

The City Action Plan sets out the aims and intentions of individuals and organisations dedicated to improving the quality of life in York and making our way of life more sustainable, between 2011-2025. Sharing Growth is one of the three priorities in the City Action Plan and one which the Health and Wellbeing Board will help deliver. Specifically, promoting the wellbeing of all of the city's residents recognising its changing demography and meeting the health and social care needs of the city's growing older population.

The Health and Wellbeing Board will also recognise and support the achievement of the key ambition 'strong neighbourhoods and communities throughout the city where people have an effective voice in local issues, are able to influence'. As stated earlier in this strategy, we have a commitment to engagement in the long term and extend the concept of co-production throughout more health and wellbeing services.

It is well documented that a thriving economy enhances the health and wellbeing of a population; therefore we need to acknowledge the other two priorities within the City Action Plan – Enabling Growth and Creating the Environment for Growth.

York Fairness Commission

The York Fairness Commission is a non-political, independent, voluntary advisory body established in 2011 with the purpose of promoting greater fairness and reduced inequality in York.

The Health and Wellbeing Board will support the Fairness Commission principles and will be a vehicle for delivering a number the health and wellbeing principles recommendations within the Commission's 'Findings and Recommendation' report and the companion report 'Ideas for Action'. Recommendations E and F are of particular relevance to the Health and Wellbeing Board and its partnership boards. Inequality is complex and multi-faceted, so the Board at times may work alongside other city partnerships to implement the recommendations and explore ideas for action.

Delivering and monitoring the strategy

The resource to deliver the Health and Wellbeing Strategy

At the time of drafting this strategy it is still unclear how much resource health and wellbeing organisations will have to implement the actions over the next three years. As highlighted earlier in this document, we are in challenging financial times, with decreasing funding and resources along with increasing demand for services. However, not all of the actions within this strategy will require additional investment. Some actions will be implemented through the synergies of more joint working. As we work together more, we will find new opportunities to jointly deliver and resource our priorities. Some actions will require health and wellbeing organisations to re-prioritise resource or funding, or re-allocate staff time so it is aligned with our priorities. Some actions will need new resources, and the Health and Wellbeing Board will work together to find the resource required to implement their commitments.

An introduction to the Health and Wellbeing Partnerships

The Health and Wellbeing Board will have overall accountability for the delivery of this strategy. They will also be accountable for delivering a number of actions set out in the City Action Plan relating to Sharing Growth and will lead our response to the Fairness Commission recommendations related to health and wellbeing.

Below the Health and Wellbeing Board are four strategic partnership boards:

1. Older People and Long Term Conditions

Chair: Dr. Tim Hughes, Vale of York Clinical Commissioning Group

2. Tackling Deprivation and Health Inequalities

Chair: Dr. Paul Edmondson-Jones, York Director of Public Health and Wellbeing

3. Mental Health and Learning Disabilities

Chair: Dr. Cath Snape, Vale of York Clinical Commissioning Group

4. Children and Young People – The YorOK Board

Chair: Councillor Janet Looker

Although the health and wellbeing partnership boards will deliver the priorities within this strategy, it is not the totality of their remit.

For example, the Older People and Long term Conditions partnership will deliver the priority 'Making York a great place for older people to live', but it will also deliver a number of priorities and actions relating to long term conditions on behalf of the Vale of York Clinical Commissioning Group, the City of York Council and partners. Similarly, the Mental Health and Learning Disabilities partnership will deliver the priority 'Improving mental health and intervening early', and it will deliver a number of priorities and actions relating to the Valuing People Now agenda.

These partnership boards are in their infancy and are not yet fully established, with the exception of the YorOk Board. In establishing these boards there is a lot of work to do to ensure we have the right membership, terms of reference and that other partnerships relating to their work know how they can be involved - the routes they can take to influence the Health and Wellbeing Board and our strategic priorities and how they contribute to delivering the strategy. The priorities for the health and Wellbeing Board will change over time, as do health and wellbeing needs. This strategy is focused on what the Health and Wellbeing Board believe they can make the biggest difference to health and wellbeing by working together at this point in time. We will ensure sufficient flexibility to enable us to address any significant health and wellbeing issues that arise so they are addressed in a timely manner. What is a priority now may well change over the coming years.

The role of the Health and Wellbeing Partnerships

Once established, the first task that these partnership boards will undertake is to set out a delivery plan for the relevant priority and the implementation of the actions. Each partnership board will be responsible for delivering a priority area.

The partnership boards will follow the principles set out in this strategy and work to deliver the commitments and actions contained within it. Each partnership board will report to the Health and Wellbeing Board annually to update on progress towards and achievement of the actions and commitments. Many of the commitments and actions have considerable scope for the partnership boards to co-design responses and solutions with communities, individuals and organisations across all sectors.

Included within this strategy are a number of cross-cutting principles and actions. To ensure their delivery, the Health and Wellbeing Board will expect to see these included in the delivery plans of all four partnership boards, before their approval.

The Health and Wellbeing Board will deliver the fifth priority, 'creating a financially sustainable local health and wellbeing system' as this requires whole system change to achieve it. The Health and Wellbeing Board will delegate work to task groups to support the delivery of this, for example, to finance officers and commissioners across health and wellbeing organisations to increase understanding of commissioning arrangements and identify opportunities for joint commissioning. In April 2013 a detailed work plan to help the Health and Wellbeing achieve the principles within this priority will be prepared.

The diagram below illustrates the relationship between the Health and Wellbeing Board, the Without Walls partnership and the four strategic partnership boards.

Delivery and monitoring – responsibility and accountability for each theme through partnership infrastructure

Without Walls Partnership

Health & Wellbeing Board

5. Resources and finances – a sustainable health and wellbeing local system

Older People & Long Term Conditions

1. Making York a great place for older people to live

Tackling deprivation & health inequalities

2. Addressing health inequalities

Mental Health & Learning Disabilities

3. Improving mental health and intervening early

Children & Young People (YorOK)

4. Enabling all children and young people to have the best start in life

Task and finish groups / Project boards / working groups as required by above boards to deliver on priorities

Monitoring the delivery and impact of the strategy

The impact of the Health and Wellbeing Strategy will be monitored on a quarterly basis.

We are currently working with the council's Performance and Intelligence Team to create a joint scorecard to monitor the impact of the Health and Wellbeing Strategy. This will be used to provide the Board with an overview of progress and delivery of our actions. The joint scorecard will be in line with the national outcomes frameworks: – public health outcomes, adult social care outcomes and NHS outcomes.

[This scorecard will be inserted here when ready.]

As well as developing a joint scorecard to allow the Health and Wellbeing Board to monitor the delivery and performance of this strategy, we want to capture the real difference some of these changes make to the residents of York. We want to use qualitative methods to get an in-depth picture of how people's health and wellbeing is being affected, what is working at what isn't. To gain this insight we will work closely with HealthWatch, the voluntary sector and the engagement officers within the organisations who sit on the Health and Wellbeing Board. We would like to invite the four partnerships boards to share any qualitative feedback with the

Health and Wellbeing Board via an annual report at a thematic board meeting. As well as monitoring against the performance indicators, this report will be expected to include the wider picture of their remit of work, rather than a narrow view of their delivery plan, case studies summarising experiences of using or accessing health and wellbeing services and how people have been engaged and involved in the evaluation.

To summarise, it is expected that the four health and wellbeing partnership boards will:

- Produce a delivery plan which will be approved by the Health and Wellbeing Board
- Produce a performance framework, monitoring the totality of their work.
- Provide a quarterly report for the Health and Wellbeing, giving an overview of progress and performance.
- Provide an annual report to the Health and Wellbeing Board, providing a thematic and detailed report on their progress and performance over that year.

Once the partnership boards are established we will have more details about how their work and the delivery of the strategy will be monitored. This work is still ongoing, but we will be able to provide further clarity by March 2013.

A reference list of strategies and plans relevant to this strategy

1. Joint Strategic Needs Assessment 2012
2. Vale of York Clinical Commissioning Group Integrated Plan (*currently in draft*)
3. Children and Young People's Plan 2012 – Dream Again
4. York Adult Care Workforce Strategy
5. Fairness Commission final report
6. City Action Plan
7. Children and Young People's Mental Health (CAMHS) strategy
8. North Yorkshire and York Review
9. Housing strategy
10. Older People's Housing Strategy
11. Financial Inclusion Strategy

Working document